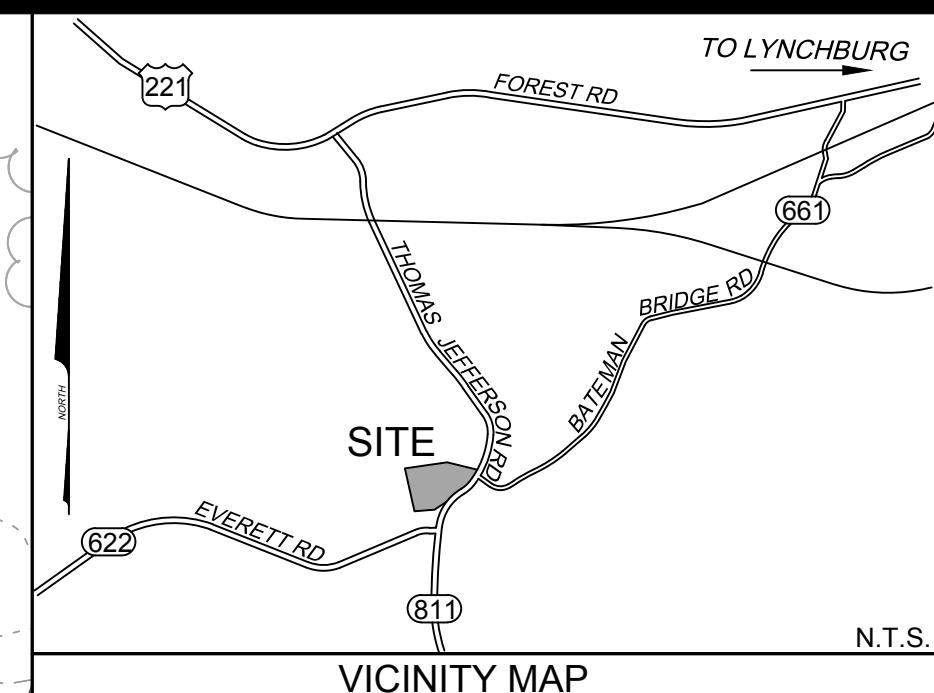


THIS SHEET IS INTENDED TO BE REPRODUCED AT 1/8" = 1'-0" SCALE. REPRODUCTION OF THIS SHEET AT A DIFFERENT SCALE THAN INTENDED SHALL VOID THE SCALE SHOWN ON THE SHEET.

JOHN E. COOPER, SR.  
TM #117-A-74C  
INST. #180004010

JOHN E. COOPER  
TM #117-A-74A  
DB 548, PG 392



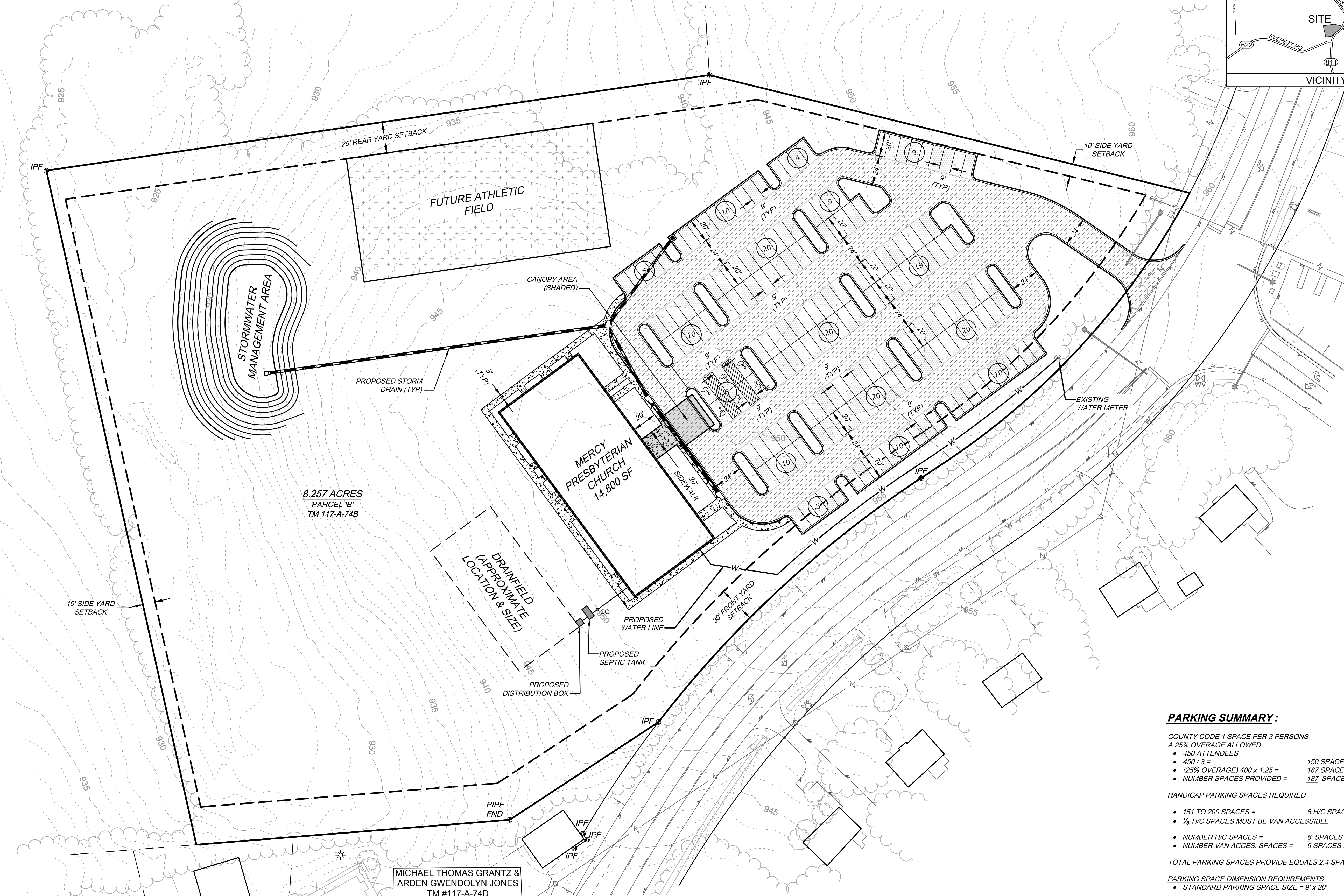
**HURT & PROFFITT**  
INSPIRED / RESPONSIVE / TRUSTED

434.847.7796  
2524 LANGHORNE ROAD  
LYNCHBURG, VA 24501

HANDP.COM  
LYNCHBURG, VA 24501

ENGINEERING • SURVEYING • LAND DEVELOPMENT • ENVIRONMENTAL  
CONSTRUCTION TESTING & INSPECTION • CULTURAL RESOURCES

**CONCEPT PLAN**  
FOR  
**MERCY PRESBYTERIAN CHURCH**  
BEDFORD COUNTY, VIRGINIA



JOHN E. COOPER, SR.  
TM #117-A-74C  
INST. #180004010

MICHAEL THOMAS GRANTZ &  
ARDEN GWENDOLYN JONES  
TM #117-A-74F  
INST. #180003837

MICHAEL THOMAS GRANTZ &  
ARDEN GWENDOLYN JONES  
TM #117-A-74E  
INST. #180003837

MICHAEL THOMAS GRANTZ &  
ARDEN GWENDOLYN JONES  
TM #117-A-74D  
INST. #180003837

**PARKING SUMMARY:**

COUNTY CODE 1 SPACE PER 3 PERSONS  
A 25% OVERAGE ALLOWED

- 450 ATTENDEES
- 450 / 3 = 150 SPACES REQUIRED
- (25% OVERAGE) 400 x 1.25 = 187 SPACES ALLOWED
- NUMBER SPACES PROVIDED = 187 SPACES PROVIDED

HANDICAP PARKING SPACES REQUIRED

- 151 TO 200 SPACES = 6 H/C SPACES REQUIRED
- 1/6 H/C SPACES MUST BE VAN ACCESSIBLE

- NUMBER H/C SPACES = 6 SPACES PROVIDED
- NUMBER VAN ACCES. SPACES = 6 SPACES PROVIDED

TOTAL PARKING SPACES PROVIDE EQUALS 2.4 SPACES PER ATTENDEE

**PARKING SPACE DIMENSION REQUIREMENTS**

- STANDARD PARKING SPACE SIZE = 9' x 20'

NO PRIVATE PRIMARY SCHOOL  
NO RECREATIONAL FIELDS

**CONCEPT INFORMATION:**

PARCEL ID: 117-A-74B  
ACREAGE: 8.257 ACRES  
ZONING: R-1 (LOW DENSITY RESIDENTIAL) & R-2 (MEDIUM DENSITY RESIDENTIAL)  
CURRENT USE: VACANT  
PROJECT DESCRIPTION: CONSTRUCTION OF A NEW CHURCH FACILITY & ALL ASSOCIATED PARKING AND STORMWATER FACILITIES.  
ADJACENT PARCEL ZONING: R-1 (LOW DENSITY RESIDENTIAL) & R-2 (MEDIUM DENSITY RESIDENTIAL)  
ADJACENT PARCEL USE: RESIDENTIAL

**LEGEND**

- HEAVY DUTY PAVEMENT
- STANDARD DUTY PAVEMENT

PROJECT NO. 20211176  
LAT. 37.3520°  
LONG. -79.2830°  
DATE: 12/9/2021  
DRAWN BY: ZPJ  
CHECKED BY: TJW



**REVIEW SET**

